

**PATENTED  
YEAR 2005**

# **UNIVERSAL CLAMPING SET FOR CNC MILLING MACHINES**



**NEW**

**NEW**

**NEW**

**STRONG SIDE CLAMPING**

**NEW**

**NEW**

**NEW**



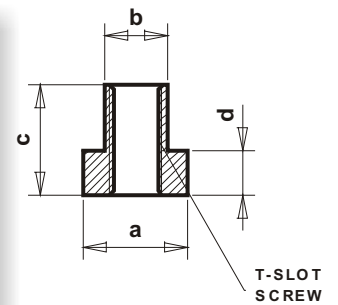
**STRONG DOWN CLAMPING**

Clamping system is specially developed for universal side and down clamping w/o change any parts. The side clamping power is up to 10 TON w/o T/SLOT moving problem. One set include all parts and screw for DOWN and SIDE clamping for your work pieces high from 20 up to 260 mm. All parts are made from hardness steel for long time working.

# ORDERING SPECIFICATIONS FOR CLAMPING SET (Dimension depend from T-SLOT and screw)

**PATENTED  
YEAR 2005**

| Clamping set<br>Part Nr. | T SLOT<br>SCREW | T SLOT specifications (mm) |      |    |      |        | Price for<br>set in EUR |
|--------------------------|-----------------|----------------------------|------|----|------|--------|-------------------------|
|                          |                 | a                          | b    | c  | d    | length |                         |
| 0125-035.M10             | M10             | 20,0                       | 11,7 | 20 | 8    | 225    |                         |
| 0125-040.M12             | M12             | 23,0                       | 13,7 | 22 | 9    | 225    |                         |
| 0125-050.M14             | M14             | 26,0                       | 15,7 | 25 | 10   | 225    |                         |
| 0125-050.M16             | M16             | 30,0                       | 17,7 | 26 | 11   | 225    |                         |
| 0125-060.M18             | M18             | 36,0                       | 21,7 | 38 | 15,5 | 225    |                         |
| 0125-060.M20             | M20             | 36,0                       | 21,7 | 38 | 15,5 | 225    |                         |



Before order please check T-SLOT dimension. We also accept customers specifications.

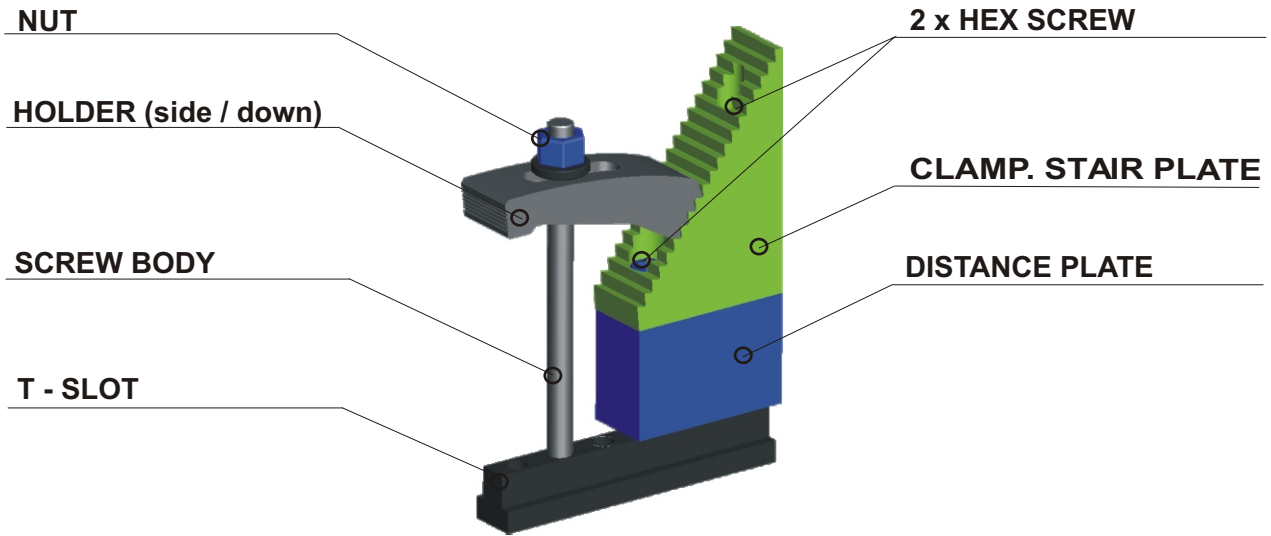
Extra leather set order is also possible, that wooden box can be used like quality business portmanteau for laptop, mobile phone etc.

## 1 SET INCLUDES FOLLOWING ELEMENTS:

| Element Part Nr. | Elements names       | Dimension                  | Peaces        | Weight/kg    | Price/EUR |
|------------------|----------------------|----------------------------|---------------|--------------|-----------|
| CSP - Mxx        | CLAMP. STAIR PLATE   | 125 x 178 x A mm           | 1             | 4            |           |
| H - Mxx          | HOLDER (side-down)   | 40 x 170 x A mm            | 1             | 1,74         |           |
| TS - Mxx         | T-SLOT               | a x b x c mm               | 1             | 0,85         |           |
| DP - Mxx         | DISTANCE PLATE 80mm  | 125 x 80 x A mm            | 1             | 3,3          |           |
| HS - 040 Mxx     | HEX SCREW            | L = 40 mm                  | 1             | 0,09         |           |
| HS - 120 Mxx     | HEX SCREW            | L=120 mm                   | 1             | 0,21         |           |
| HS - 150 Mxx     | HEX SCREW            | L=150 mm                   | 1             | 0,33         |           |
| HS - 280 Mxx     | HEX SCREW            | L=280 mm                   | 1             | 0,46         |           |
| SB - 100 Mxx     | SCREW BODY           | L=100 mm                   | 1             | 0,13         |           |
| SB - 150 Mxx     | SCREW BODY           | L=150 mm                   | 1             | 0,20         |           |
| SB - 200 Mxx     | SCREW BODY           | L=200 mm                   | 1             | 0,28         |           |
| SB - 250 Mxx     | SCREW BODY           | L=250 mm                   | 1             | 0,36         |           |
| SB - 300 Mxx     | SCREW BODY           | L=300 mm                   | 1             | 0,43         |           |
| SB - 350 Mxx.    | SCREW BODY           | L=350 mm                   | 1             | 0,51         |           |
| LN               | LONG NUT             | M10,M12,M14,M16,M18 or M20 | 2             | 0,14         |           |
| SN               | SHORT NUT            | M10,M12,M14,M16,M18 or M20 | 2             | 0,17         |           |
| BLT              | BUSINESS LEATHER SET |                            | 1             |              |           |
| WB               | WOODEN BOX           | 410 x 330 x 80mm           | 1             | 2            |           |
| <b>TOTAL</b>     |                      |                            | <b>20 pcs</b> | <b>15,20</b> |           |

|                 |                 |
|-----------------|-----------------|
| A (M10) = 35 mm | A (M16) = 50 mm |
| A (M12) = 40 mm | A (M18) = 60 mm |
| A (M14) = 50 mm | A (M20) = 60 mm |

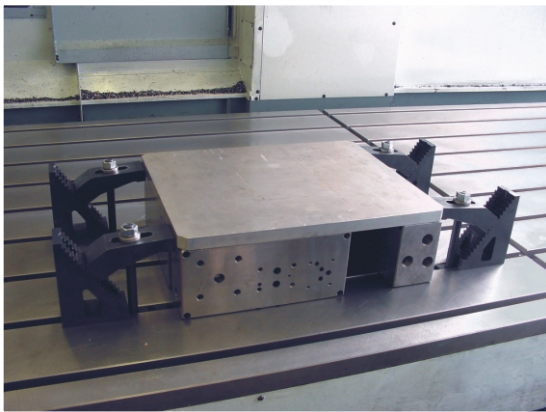
- The price validity only for separate elements order M16, for another dimension price is proportionally.
- In case of separate element order please specify screw dimension in Element Part Nr. (Mxx)



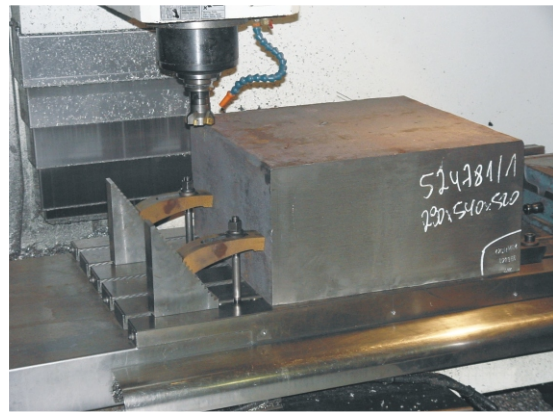
Assembling all parts together show the clamping principle.

**FOR QUALITY CLAMPING YOU NORMALLY NEED  
FOUR CLAMPING SETS.**

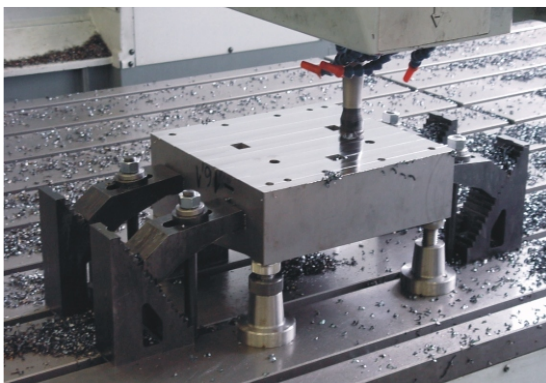
### ***SIDE CLAMPING***



Thin Al plate clamping for planing



Strong side clamping for routing



Strong side clamping for planing



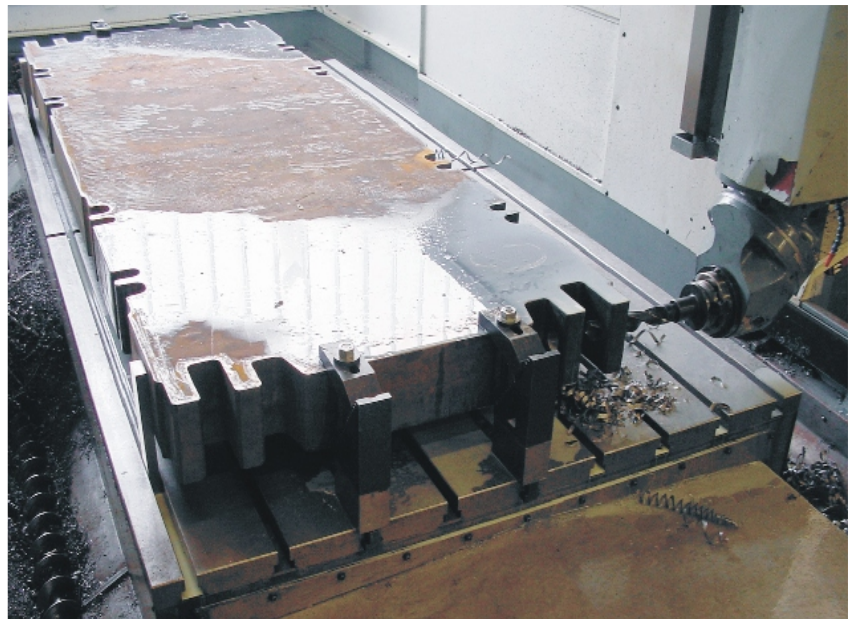
Strong side clamping for planing

## DOWN CLAMPING

**PATENTED  
YEAR 2005**



FOR STRONG ROUTING WE  
RECOMMEND DOWN CLAMPING.



FOR SIDE BORING WE  
RECOMMEND DOWN CLAMPING.

**DEALER:**



**STT STROJNA TOVARNA TRBOVLJE, inc.**  
*Tools and machinery manufacturer*

Vodenska cesta 49, 1420 TRBOVLJE, SLOVENIA  
Tel.: +386 (0) 356 33 551, 386 (0) 356 33 569, Fax: +386 (0) 356 33 558  
E-mail: [info@stt.si](mailto:info@stt.si) Internet: [www.stt.si](http://www.stt.si)